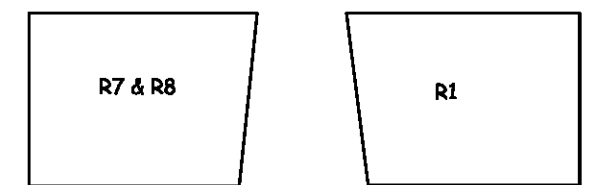
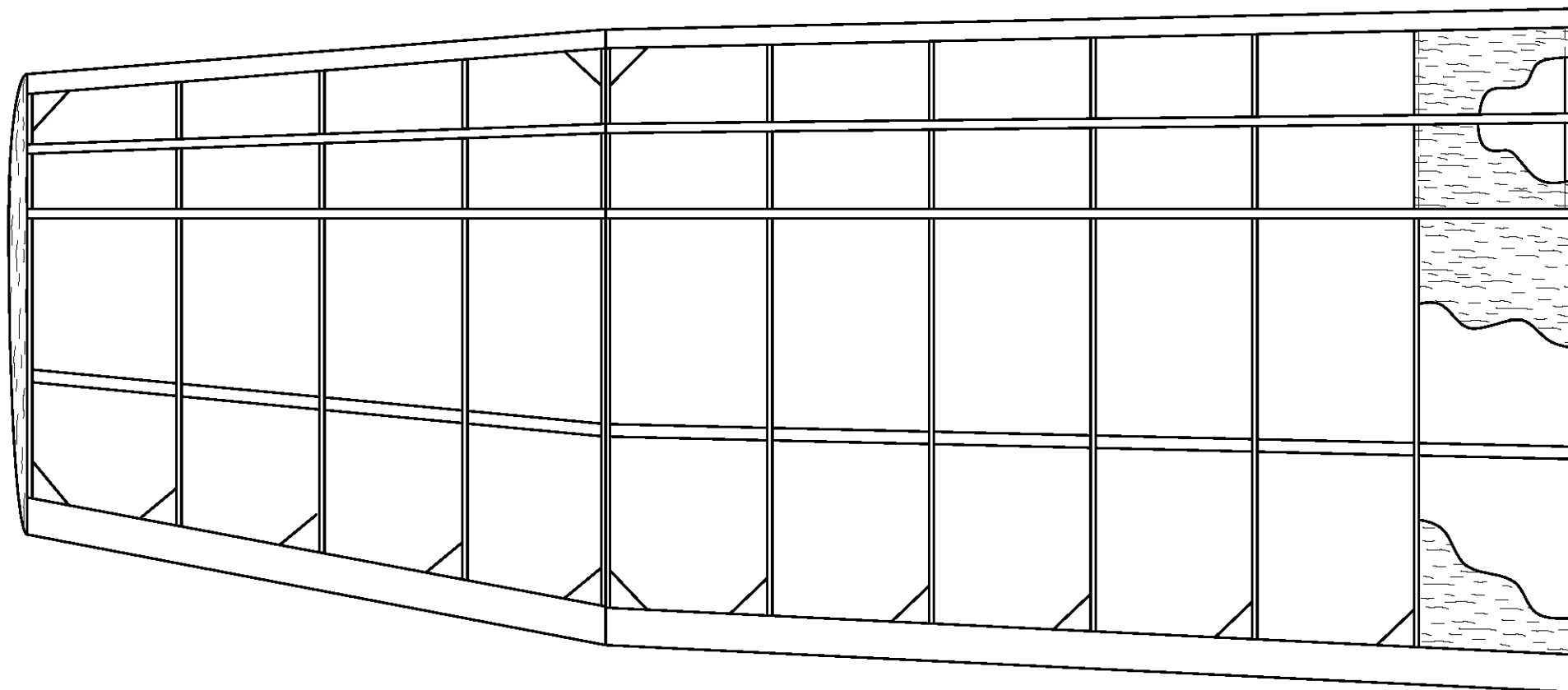
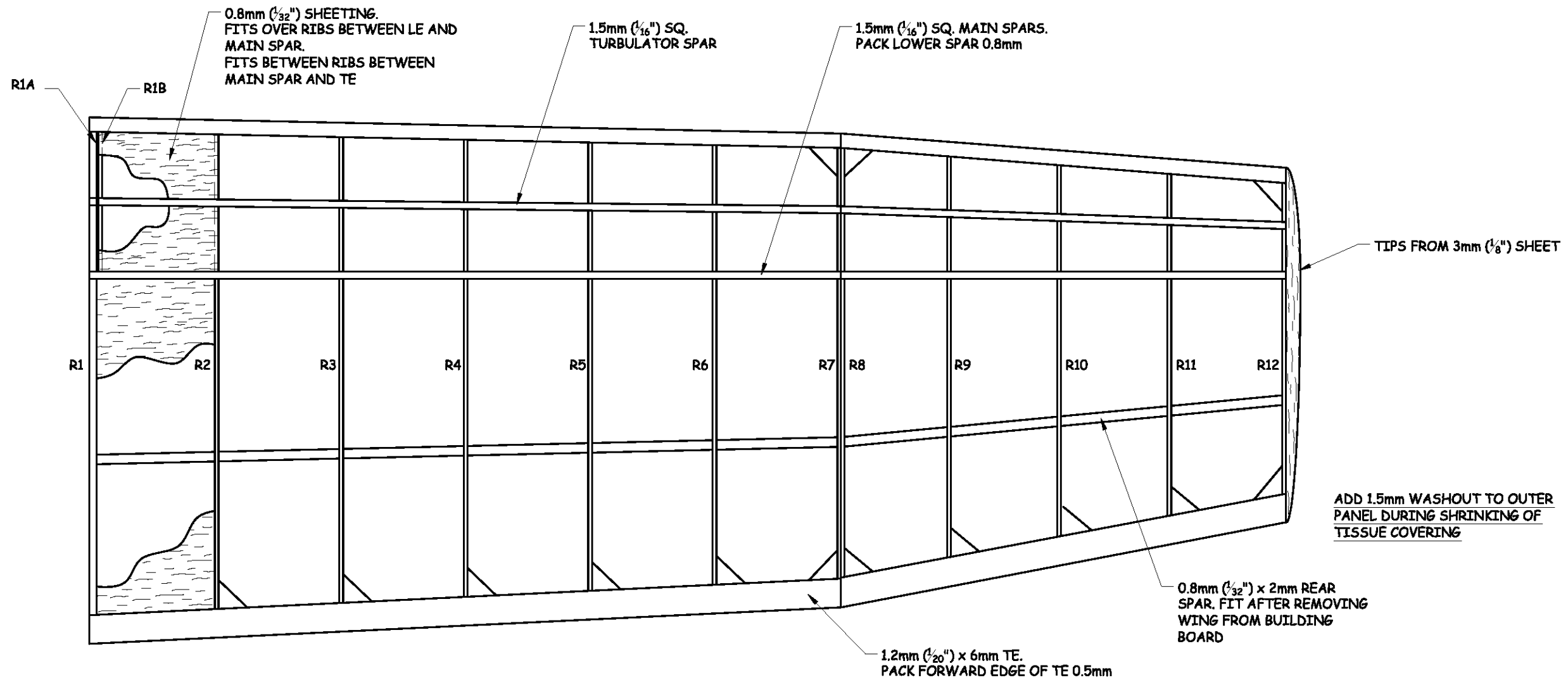


0mm 100mm  
ALL 1.5mm Balsa ONO.

WEIGHT OF PROTOTYPE = 24g  
INC. NOSE WEIGHT

**'Scorpio'**  
A 490mm 19 1/4" span duration model  
for Rapier L2 power  
Designed and Drawn by Steve Bage

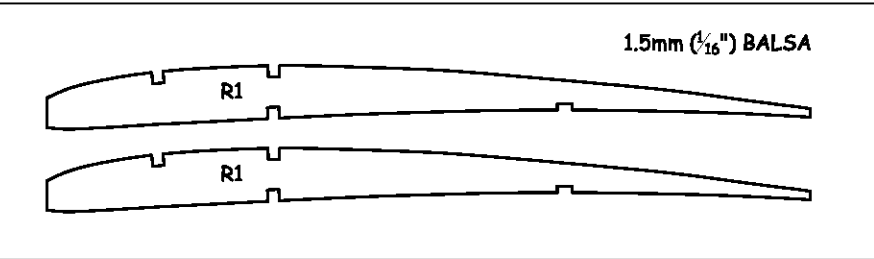
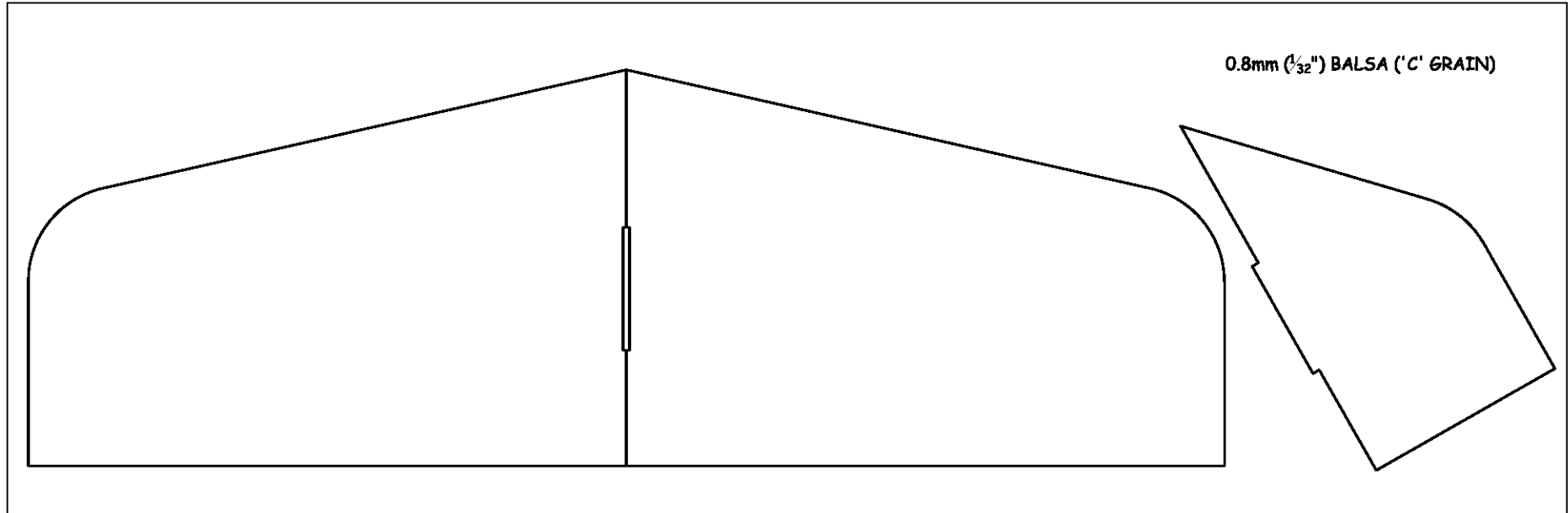
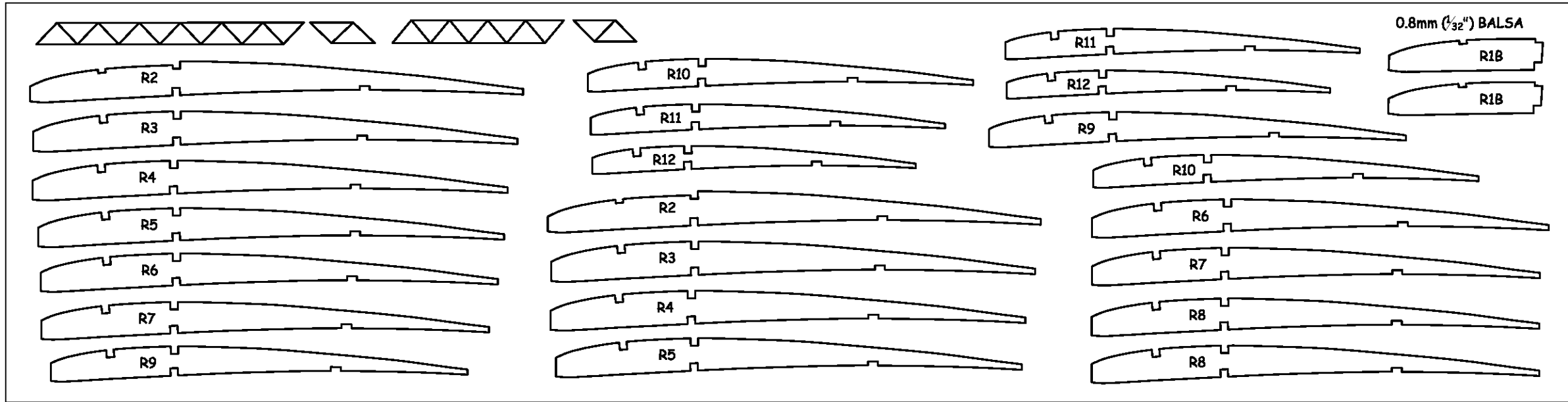
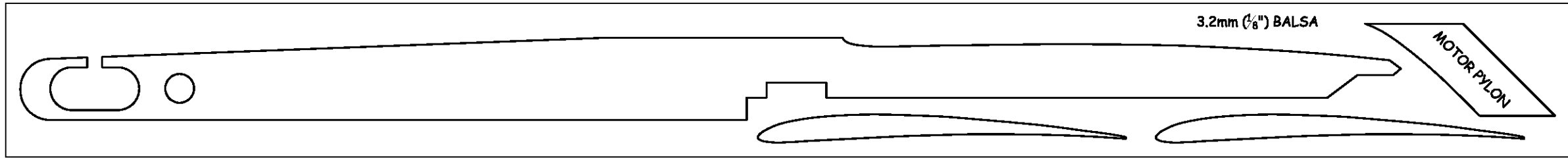
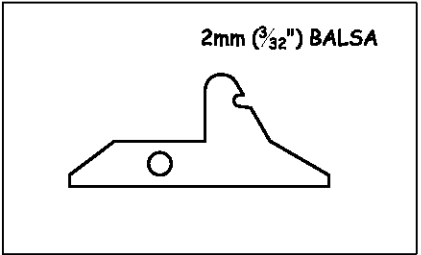
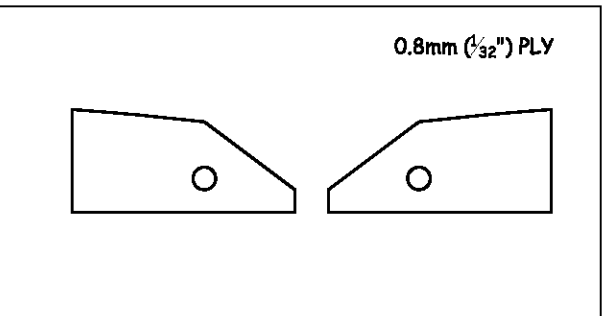
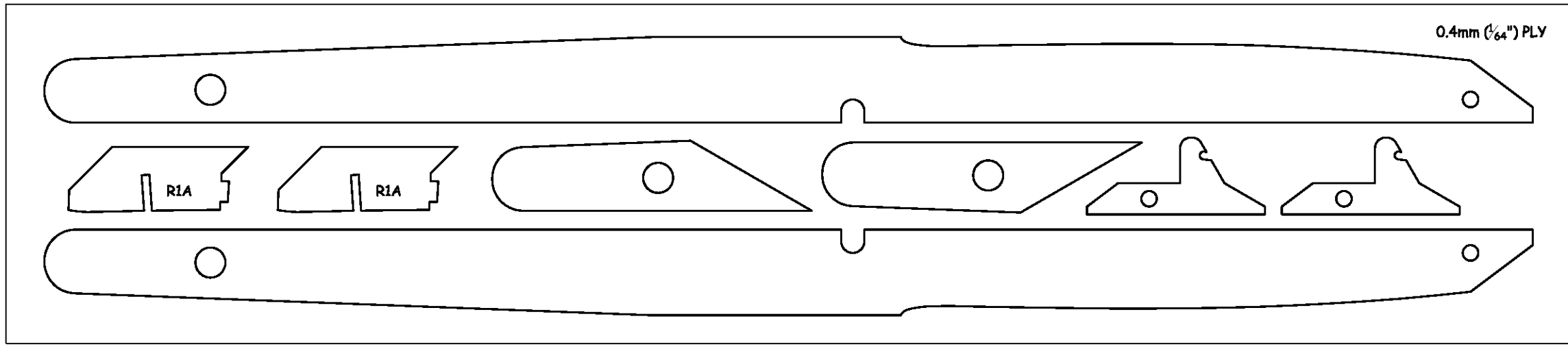


JIGS FOR RIB ANGLES AT DIHEDRAL BREAKS

0mm 100mm

ALL 1.5mm BALSA ONO.

**'Scorpio'**  
 A 490mm 19  $\frac{1}{4}$ " span duration model  
 for Rapier L2 power  
 Designed and Drawn by Steve Bage



**'Scorpio'**  
 A 490mm 19 1/4" span duration model  
 for Rapier L2 power  
 Designed and Drawn by Steve Bage